

Phenolic resin derived from *Jatropha curcas* seed-husk lignin as phenol substitute

Carlos Alberto Vega-Aguilar¹; Giselle Lutz²; Julio F. Mata-Segreda³

Biomass Laboratory, School of Chemistry, University of Costa Rica, 11501-2060, Costa Rica.

1. carlos.vegaaguilar@ucr.ac.cr
2. giselle.lutz@ucr.ac.cr
3. julio.mata@ucr.ac.cr

Received 27-I-2015 • Corrected 03-VII-2015 • Accepted 03-VII-2015

ABSTRACT: Phenolic resin derived from *Jatropha curcas* seed-husk lignin as phenol substitute. A phenolic resin was made, with a fraction of the phenol content substituted by lignin extracted from *Jatropha curcas* seed husk. The husk was analysed for chemical composition, finding a high quantity of lignin (47% mass fraction). This lignin was extracted using an alkaline pulping method, followed by precipitation with acid. Several lignin-modified phenolic resins were made, using different lignin contents, in mixtures with formaldehyde in alkaline conditions, and curing at 65 °C for 6 hours. It was noticed that the lignin substitution percentage affects the resin's mechanical properties, obtaining better results with a 50% substitution. These resins showed good thermal behaviour, electrical insulation properties and good physical stability against water, acidic solutions and organic solvents, but it lacked on stability against alkaline solutions. It is concluded that there is a good opportunity for using the *J. curcas* seed husk lignin as partial substitute of phenol in phenolic resins, without sacrificing their physicochemical properties. There is a wide range of possibilities on using *J. curcas* agro-industrial residues as a renewable feedstock.

Key words: *Jatropha curcas*, lignin, phenolic resin, lignin-formaldehyde resin, physicochemical properties.

RESUMEN: El objetivo de este estudio fue el desarrollo de una resina fenólica, en la cual parte del fenol utilizado fue sustituido por lignina extraída a partir de la cascarilla de la semilla de *Jatropha curcas*. Se analizó la composición de dicha cascarilla, determinándose un alto contenido de lignina (47% en masa) que podría ser utilizada para el objetivo deseado. Esta lignina se extrajo por medio de pulpeo alcalino con precipitación en medio ácido. Se elaboró diversas resinas fenólicas con variación en la sustitución de fenol, utilizando diferentes porcentajes de lignina, en mezclas con formaldehído en medio alcalino, con curado a 65°C por 6 horas. Se evidenció que el grado de sustitución afecta las propiedades mecánicas de las resinas, obteniéndose mejores propiedades con un 50% de sustitución. Estas resinas presentaron buen comportamiento térmico, propiedades electroaislantes y estabilidad física al agua, disoluciones ácidas y disolventes orgánicos, pero no a disoluciones básicas. Se concluye que existe una amplia oportunidad en el uso de la lignina de la cascarilla de *J. curcas* como sustituto parcial del fenol en resinas fenólicas, sin sacrificar sus propiedades fisicoquímicas. Además, se vislumbra la gran gama de posibilidades para el uso de residuos agroindustriales de *J. curcas* como fuente de materia prima renovable.

Palabras clave: *Jatropha curcas*, lignina, resina fenólica, resina lignina-formaldehído, propiedades fisicoquímicas.

One of the main characteristics of the *Jatropha curcas* plant is the high production of non-edible oil, widely used for the making of biodiesel. However, several residues are generated during the production process. One of these residues is the seed husk, which represents the third part of the seed mass (Heller, 1996; Sotolongo, Díaz & Montes de Oca, 2007; OCTAGON, 2007).

The seed husk chemical composition was published by Makkar, Becker & Schmook (1998) where several analysed varieties presented a high content of lignin, over 45% on a dry basis. Lignin is a natural heterogeneous polymer, based on three monomers: guaiacyl, syringyl

and *p*-hidroxyphenylpropane. (Tejado, Peña, Labidi, Echeverría & Mondragón, 2007). Based on the phenolic structure, lignin presents some chemical characteristics that allow it to substitute phenol on several resins and adhesives, such as phenol-formaldehyde resins, decreasing the use of phenol (Pérez, Rodríguez, Alonso, Oliet & Echeverría, 2007).

Phenolic resins are thermo-stable polymeric structures, which are produced by reacting phenol (or a substitute phenol) with formaldehyde. Based on the components ratio, they are called resols or novolacs. They are stable at high temperature, have electric isolation properties and

present chemical stability. These properties have opened their use to many applications (Kopf, 2000).

It has been reported the use of lignin in several phenolic resin formulations, substituting phenol partially or completely (León & Sanabria, 1988; Alonso, Oliet, Pérez, Rodríguez & Echeverría, 2004; Derek, 2008; Effendi, Kalaycioglu & Hiziroglu, 2008; Gabilondo, López, Ramos, Echeverría & Mondragon, 2007; Nada, Abou-Youssef & El-Gohary, 2003; Pérez et al., 2007).

In most cases they obtained a resin with good properties only if they substituted phenol partially. Using a high percentage of lignin affects the mechanical and physical properties, because there is insufficient polymerization (Nada et al., 2003). This study is focused on the extraction of lignin from *Jatropha curcas* seed husk and its incorporation into phenolic resins, because no study has reported the use of this lignin to synthesize a modified-phenolic resin.

MATERIALS AND METHODS

Materials: *Jatropha curcas* seeds were obtained from the Fabio Baudrit Experimental Station, University of Costa Rica. This station is located in La Garita, Alajuela, Costa Rica (Coordinates: 10.004099 N, -84.267873 E). The seed husk was manually separated, and grinded in a millstone, obtaining particles of less than 1mm length.

Analysis of seed husk: Several analyses were carried out to the seed husk: moisture content, extractable substances, ashes, acid insoluble lignin and heat of combustion. In the first four analyses, specific TAPPI standard methods for each analysis were used. For heat of combustion it was ASTM D5865-07a standard method.

Lignin extraction: A pulping method was applied, it consisted of 15,0g of seed husk with 250 mL of NaOH 2 mol/L, and reflux during 8 hours with stirring. Afterwards, it was filtered while still hot to remove the seed husk particles, and the liquid was acidified with H₂SO₄ 3 mol/L until pH~2 was achieved. The precipitated lignin was filtered through filter paper and a Büchner funnel, and washed with hot water until neutrality. The lignin cake had a ~70% moisture.

Preparation of lignin-modified resin: The modified method of Khan, Ashraf & Malhotra (2004) was used. The lignin cake was mixed in a phenol:lignin ratios of 0%, 25%, 50%, 75% and 100%, based on the dry lignin weight

in the cake. This resin was pre-polymerized with 37% aqueous formaldehyde as a binder, NaOH as a catalyst and methanol and water as solvents. The curing process was done at 65°C for 6 hours in the oven, without any other added substance.

Characterization of lignin-modified resin: The lignin and phenolic resins were characterized using FT-IR (Perkin Elmer, Spectrum FT 1000), in KBr pellets. The 0%, 50% and 100% lignin-modified resins and the pure lignin were analyzed with thermogravimetric analysis (TGA) (TA Instruments Q500). The chemical resistance was tested with water, 95% ethanol, acetone, 0,1mol/L aq. HCl and 0,1mol/L aq. NaOH on 0% and 50% modified resins, submerging a small fragment of resin in the solutions and monitoring weight changes through time.

Electroisolating property was tested using the Mena, Castro & Castellón (2012) method. The equipment was composed of a RadioShack multimeter, model 22-821, and two metal rod (diameter= 0,470cm, resistance= 2Ω). Pressure was applied using a 2kg weight.

RESULTS

The results of the lignin physicochemical analyses are presented in table 1, with a comparison with several published data by Makkar, Becker & Schmook (1998).

Next, the lignin was extracted using the selected method. About 50% of the lignin in the seed husk was extracted, which represented the 23% of the husk weight. To achieve these percentages, several conditions had to be optimized, such as heating time, liquid: solid ratio and lignin precipitation techniques.

After the extraction method, a lignin cake was obtained with approximately 70% moisture. This cake was kept refrigerated until resin preparation. The cake was characterised using FT-IR analysis (Fig. 1). The spectra shows specific bands for guaiacyl units (near 1275, 1153 and 1037 cm⁻¹), while syringyl unit bands are missing (near 1330, 1220 and 1120 cm⁻¹), pointing out a high quantity of guaiacyl units in the extracted lignin (Ibrahim, Agblevor & El-Zawawy, 2010).

The lignin TGA (Fig. 2.A) shows quick thermal degradation between 125-320 °C, while it has been reported that this thermal degradation for lignin occurs between 200-400°C (Ibrahim, Zakaria, Sipaut, Sulaiman & Hashim, 2011).

Khan, Ashraf & Malhotra (2004) modified method was used to obtained the modified-phenolic resins. The

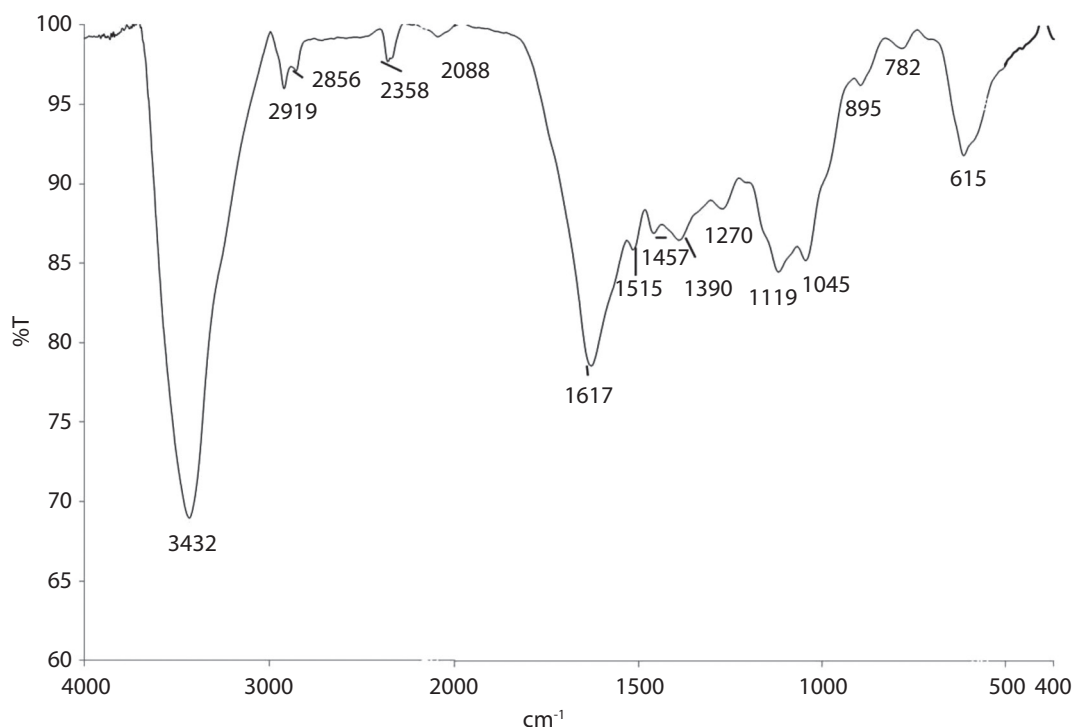


Fig. 1. FT-IR spectrum of extracted lignin using NaOH pulping.

TABLE 1
Determination of composition of *J. curcas* seed husk, with data published by Makkar et al. (1998)

Parameter	Unit	Experimental value	Makkar et al. (1998)		
			Cabo Verde	Nicaragua	México
Moisture content	g/100 g	10,88 ± 0,09	9,7	9,6	10,2
Dry matter	g/100 g	89,1 ± 0,7	90,3	90,4	89,8
Acid insoluble lignin (DB)	g/100 g	47 ± 1	45,1	47,5	45,6
Ashes (DB)	g/100 g	3,8 ± 0,1	6	6,1	2,8
Ethanol:toluene extracts (DB)	g/100 g	2,79 ± 0,01	-	-	-
95% ethanol extracts (DB)	g/100 g	0,69 ± 0,05	-	-	-
Water extracts (DB)	g/100 g	6,0 ± 0,9	-	-	-
Holocellulose (DB)*	g/100 g	32 ± 5	-	-	-
Heat of combustion	MJ/kg	16,8 ± 0,4	19,3	19,5	19,5

*Calculated on the difference between 100% and the sum of all measure components; DB: dry basis.

control resin (without lignin, named PF) was very hard to grind and presented a dark purple shining colour. The lignin-modified phenolic resins (LPF) were hard to grind (not as much as the control resin) and presented an opaque dark brown colour. The resins with the highest percentage of lignin (75% and 100%) showed fractures at the edges.

As the lignin:phenol ratio was higher, several bands were affected in the FT-IR spectra (table 2). The 2826 and

2715 cm^{-1} bands indicates a bonding between *Jatropha* lignin and resin due to condensation of the lignin aldehyde (-CHO) group with a phenolic resin methylol group, confirming the incorporation. Also, the increasing intensity of the 765 cm^{-1} band, associated to the aromatic-aliphatic C-C bond, shows reaction between the lignin and phenol (Sarkar & Adhiraki, 2001).

The TGA show the difference in thermal behaviour between the control resin (no lignin) and the

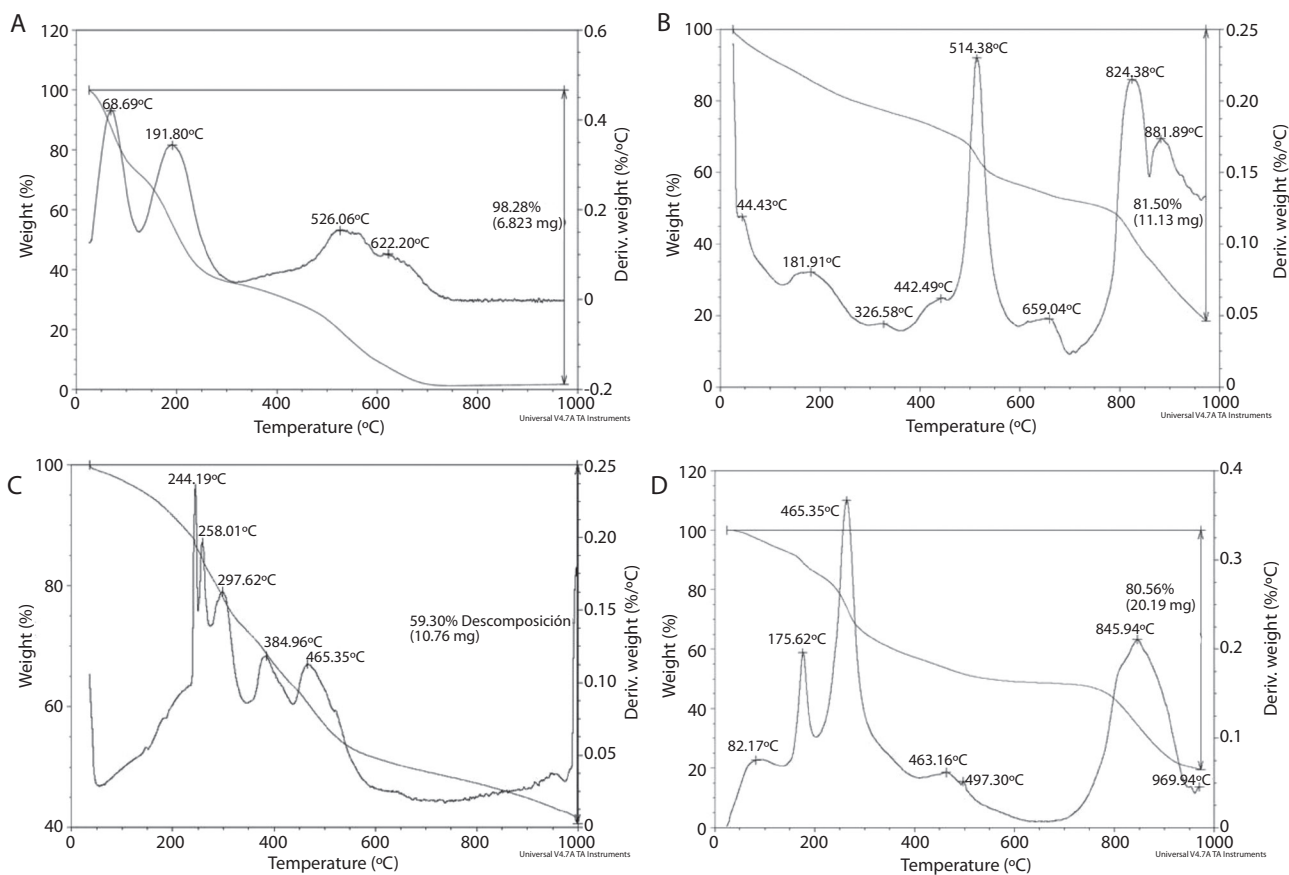


Fig. 2. TGA thermograms of A) lignin, B) control resin (PF), C) 50% lignin-modified resin and D) 100% lignin-modified resin.

TABLE 2
Peak assignment and variations observed in IR spectra for control resin (PF) and modified resins (LPF)

Peak (cm ⁻¹)	Assignment	Variation observed due to increasing lignin percentage
2 826	ν C-H (OCH ₃) ^{a,e}	Increases (no presence in PF)
2 715		
~1 610	ν C=C, aromatic skeleton ^{a,d}	Increases
~1 470	ν C-H, aliphatic ^d	Decreases
~1 370	δ_{ip} O-H phenolic ^{c,d}	Increases considerably
~1 210	ν C-O aromatic (methoxyl, guaiacyl) ^c	Decreases
~1 040	δ_{ip} C-H aromatic (guaiacyl) ^a	Lightly increases
~765	δ C-C aromatic-aliphatic ^e	Increases

ν : Stretching; δ : deformation; ip: in plane; op: out of plane.

Sources: a) Ibrahim *et al.*, (2011); b) Khan *et al.* (2004); c) Hergert (1959); d) Poljanšek & Krajnc (2005); e) Sarkar & Adhiraki (2001).

lignin-modified resin. In Fig. 2, the thermal degradation of lignin-modified resins occurs below the temperature where the control resin degrades. Usually the phenolic resins hold until 514°C without losing more than 40% of their original weight (Kopf, 2000). But the modified resin

degrades between 200-400°C, mainly because of lignin degradation, besides there is not a perfect cross-linking in the polymeric matrix.

The resins solubility analysis (Fig. 3) shows the percentage change of weight in the resins samples when

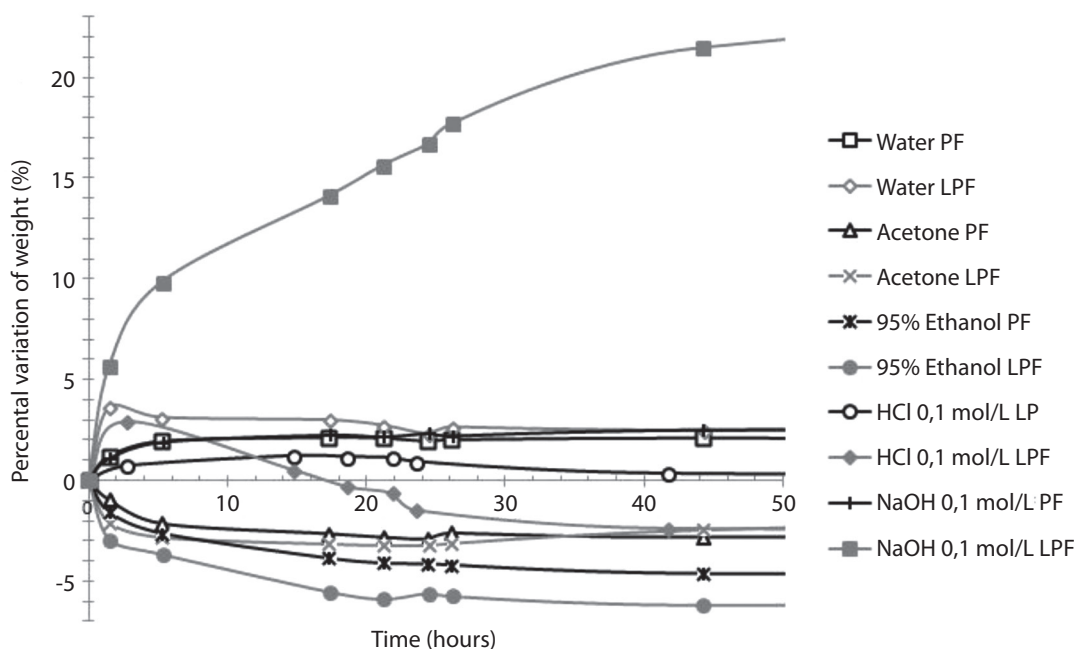


Fig. 3. Variation on initial weight for control resin (PF) and 50% lignin modified resin (LPF) under contact of several common use solvents.

exposed to different solutions. In general, there is a small decrease of weight (no more than 7% in 50 hours of contact) when using water, acetone, ethanol and 0,1 mol/L aq. HCl, on the control resin and the 50% lignin-modified resin. However, when using 0,1 mol/L aq. NaOH there is a high weight increase in the lignin-modified resin, because it is soluble in alkaline solutions and quickly absorbs the solution.

Variation on initial weight for control resin (PF) and 50% lignin modified resin (LPF) under contact of several common use solvents.

Finally, the electric insulation analyses were done using equipment with a maximum resistance of 40MΩ. When the resins were measured, both the control and the modified resins, were over this value. When this resistance value was converted to electric resistivity, one obtained $4 \times 10^6 \Omega \cdot m$, which is the smaller electric resistivity the resin could have.

DISCUSSION

The chemical composition of the seed husk is similar to other husks previously analyzed by Makkar et al. (1998). Low ash content and a heat of combustion over 16MJ/kg favours the use of *J. curcas* seed husk as a solid fuel in

biomass combustion processes (Mendu et al., 2011), offering a possible use for this residue.

The seed husk has a notable high quantity of lignin, which could be extracted and used as feedstock for several processes. Based on this conclusion, the lignin was extracted using alkaline pulping. Several parameters had to be optimized to achieve the best extraction, specially heating time, liquid:solid ratio and the precipitation methodology. Using this optimized process, about 50% of the previously determined lignin was obtained.

The lignin FT-IR spectra showed that there is a high amount of guaiacyl units, which have a C5 free position in the ring (ortho position to the phenolic hydroxyl group), having a higher activity towards formaldehyde electrophilic substitution. This is important if one aims for a good polymerization in the phenolic resin (Tejado et al., 2007). In the syringyl units the C5 positions are occupied and the activity of this unit is minimal in phenolic resin polymerization. As a conclusion, using a lignin with high amount of guaiacyl units allow their use in modifying phenolic resins.

However, the lignin TGA shows a low thermal stability, property associated to high cross-linking in the polymer and the development of highly condensated aromatic structure (Ibrahim et al., 2011). This result shows that the lignin cross-linking quality is not high enough, and

can be based on the original plant nature or the applied treatment (Cheng, Winter & Stipanovic, 2012). A low thermal stability could affect the use of lignin in thermo-stable resins, that is why is important to determine TGA analysis on the obtained resins.

When the modified resins were made, some mechanical properties were lessened and several fractures appeared when high lignin substitution was used. The modified resin with 50% lignin presented the best mechanical properties. The FT-IR spectra showed good lignin incorporation in the resin matrix, by increasing several specific bands, shown in table 2. However, based on the fractures physical evidence, it is recommended a partial substitution, with no more than 50% of lignin.

The TGA results showed modified resins with a lower stability vs. the control resin, possibly due to lignin low thermal stability. It is not recommend the use of modified resins on high temperatures applications. However, it could be used at temperatures under 100°C, where there would not be significant weight losses that could affect the resin properties.

The electric resistivity data confirmed the possible use of modified resins as electric insulators, because the electric resistivity obtained is similar to several electric insulating materials (Callister & Rethwisch, 2010). The specific electric resistivity value was not obtained because the resins were over the measuring equipment upper limit. But defining the lower limit of $4 \times 10^6 \Omega \times m$ can ensure these resins are on the typical electrical resistivity values for electric insulators.

Finally, the behaviour of the modified resins in different solutions was analyzed and shown in Fig. 3. In the presence of water, 95% ethanol, acetone and 0,1mol/L aq. HCl, the 50% lignin resin did not undergo any radical changes (a maximum weight loss of 7%), which is comparable to control resin. However, when an alkaline solution was used (0,1mol/L aq. NaOH), the resin absorbed more than 20% of the original weight and the solution turned yellow. This happened because the lignin is soluble in alkaline solutions, showing its low chemical stability towards alkaline solutions.

As a conclusion, obtaining a modified phenolic resin based on *J. curcas* seed husk lignin is technically viable, introducing desirable characteristics of thermal, electric and chemical stability. Some previsions should be taken if the resins would be used in specific chemical and

physical environments, either high temperatures or presence of alkaline solutions.

This way one could take advantage of an agro-industrial residue, improving its value and strengthening the chemical migration into technological biomaterials.

ACKNOWLEDGEMENTS

We thank the Nanotechnology National Laboratory (LANOTEC) for access to TGA equipment, and the School of Chemistry of the University of Costa Rica, for access to several measurement equipments.

REFERENCES

- Alonso, M. V.; Oliet, M.; Pérez, J.M.; Rodríguez, F. & Echeverría, J. (2004). Determination of curing kinetic parameter of lignin-phenol-formaldehyde resol resins by several dynamic differential scanning calorimetry methods. *Thermochemica Acta*, 419: 161-167. doi: 10.1016/j.tca.2004.02.004
- Callister, W.D. & Rethwisch, D.G. (2010). *Materials Science and Engineering. An Introduction* (8° ed.). Unites States: Springer.
- Cheng, K.; Winter, W.T. & Stipanovic, A.J. (2012). A modulated-TGA approach to the kinetics of lignocellulosic biomass pyrolysis/combustion. *Polymer Degradation and Stability*, 97, 1606-1615. doi: 10.1016/j.polymdegradstab.2012.06.027
- Derek, S. (2008). Lignin as a base material for materials applications: Chemistry, application and economics. *Industrial Crops & Production*, 27: 202-207. doi: 10.1016/j.indcrop.2007.07.008
- Effendi, A.; Gerhauser, H. & Bridgwater, A.V. (2008). Production of renewable phenolic resins by thermochemical conversion of biomass: A review. *Renewable & Sustainable Energy Reviews*, 12: 2092-2116. DOI: 10.1016/j.rser.2007.04.008.
- Gabilondo, N.; López, M.; Ramos, J.A.; Echeverría, J.M. & Mondragon, I. (2007). Curing kinetics of amine and sodium hydroxide catalyzed phenol-formaldehyde resins. *Journal of Thermal Analysis And Calorimetry*, 90: 229-236. doi: 10.1007/s10973-006-7747-3
- Heller, J. (1996). *Physic nut. Jatropha curcas. Promoting the conservation and use of underutilized and neglected crops*. 1. Roma: Institute of Plant Genetics and Crop Plant

Research, Gartersleben, International Plant Genetic Resources Institute.

- Ibrahim, M.M.; Agblevor, F.A. & El-Zawawy, W.K. (2010). Isolation and characterization of cellulose and lignin from steam-exploded lignocellulosic biomass. *BioResources*, 5(1): 397-418.
- Ibrahim, M.N.M.; Zakaria, N.; Sipaut, C.S.; Sulaiman, O. & Hashim, R. (2011). Chemical and thermal properties of lignins from oil palm biomass as a substitute for phenol in a phenol formaldehyde resin production. *Carbohydrate Polymers*, 86: 112-119. doi: 10.1016/j.carbpol.2011.04.018
- Khan, M.A.; Ashraf, S.M. & Malhotra, V.P. (2004). Development and characterization of a wood adhesive using bagasse lignin. *International Journal of Adhesion & Adhesives*, 24: 485-493. doi: 10.1016/j.ijadhadh.2004.01.003
- Kopf, P.W. (2000). Phenolic resins. In *Kirk-Othmer encyclopedia of chemical technology* (4th ed.) New York: Wiley. DOI: 10.1002/0471238961.1608051411151606.a01
- León, S. & Sanabria, F. (1988). Obtención de resinas fenólicas termoestables de lignina extraída del bagazo de la caña de azúcar. *Uniciencia*, 5(1-2): 47-52.
- Makkar, H.P.S.; Becker, K. & Schmoock, B. (1998). Edible provenances of *Jatropha curcas* from Quintana Roo state of Mexico and effect of roasting on antinutrient and toxic factors in seeds. *Plant Foods for Human Nutrition*, 52: 31-36.
- Mena, K.; Castro, J.A. & Castellón, E. (2012, 10th-11th December). *Funcionalización de fibras vegetales con polímeros conductores y partículas magnéticas*. In 7^o Simposio de Ciencia de Materiales Avanzados y Nanotecnología 2012. San José: Centro de Investigación en Ciencia e Ingeniería de Materiales, Universidad de Costa Rica.
- Mendu, V.; Harman-Ware, A.; Crocker, M.; Jae, J.; Stork, J.; Morton III, S.; Placido, A.; Huber, G. & DeBolt, S. (2011). Identification and thermochemical analysis of high-lignin feedstocks for biofuel and biochemical production. *Biotechnology for Biofuels*, 4(43): 1-13. doi: 10.1186/1754-6834-4-43.
- Nada, A.M.A.; Abou-Youssef, H. & El-Gohary, S.E.M. (2003). Phenol Formaldehyde Resin Modification with Lignin. *Polymer-Plastics Technology and Engineering*, 42(4): 689-699. doi: 10.1081/PPT-120023103
- OCTAGON, S. A. Biocombustibles. (2007). *Jatropha curcas L. Su expansión agrícola para la producción de aceites vegetales con fines de comercialización energética*. Guatemala: Alianza en Energía y Ambiente con Centroamérica.
- Pérez, J.M.; Rodríguez, F.; Alonso, M.V.; Oliet, M. & Echeverría, J.M. (2007). Characterization of a novolac resin substituting phenol by ammonium lignosulfonate as filler or extender. *BioResources*, 2: 270-283.
- Poljanšek, I. & Krajnc, M. (2005). Characterization of Phenol-Formaldehyde Prepolymer Resins by In Line FT-IR Spectroscopy. *Acta Chimica Slovenica*, 52: 238-244.
- Sarkar, S. & Adhikari, B. (2001). Jute Felt Composite From Lignin Modified Phenolic Resin. *Polymer Composites*, 22(4): 518-527. doi: 10.1002/pc.10556.
- Sotolongo, J. A.; Díaz, A. A. & Montes de Oca, S. (2007). Potencialidades energéticas y medioambientales del árbol *Jatropha curcas* L. en las condiciones edafoclimáticas de la región semiárida de la provincia de Guantánamo. *Tecnología Químicas*, 27: 76-82.
- Tejado, A.; Peña, C.; Labidi, J.; Echeverría, J.M. & Mondragón, I. (2007). Physico-chemical characterization of lignins from different sources for use in phenol-formaldehyde resin synthesis. *Bioresource Technology*, 98: 1655-1663. doi: 10.1016/j.biortech.2006.05.042

